

# TECH DATA SHEET

## **EPOXY PATCH REPAIR SYSTEM** **3 PACK –FAST CURE (WALK ON 3-4 HOURS)** **3 PACK-STANDARD CURE (WALK ON 10-12 HOURS)**

### USES

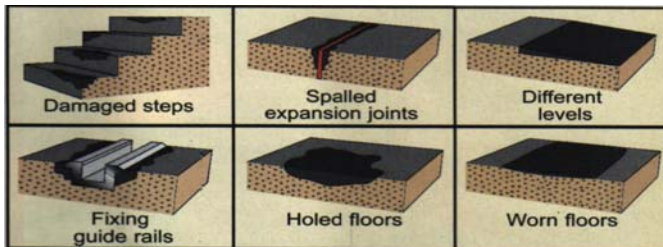
CONSTRUCTION CHEMICALS Epoxy Patch Repair System is suitable for use in the repair of worn and damaged concrete where a high strength repair material is required. Used in situations which include damaged concrete surfaces such as steps or factory floors.

CONSTRUCTION CHEMICALS Patch Repair System is a low odour material and can be used in food environments.

### DESCRIPTION

CONSTRUCTION CHEMICALS Epoxy Patch Repair System is based on a blend of epoxy resin, curing agents and selected aggregates.

All items are supplied pre-weighed and packed ready for mixing on site. The finished material provides a non-skid and abrasive resistant surface, with good resistance to dilute acids, petrol, oil and grease.



*Worn or damaged steps plus many other repairs can be easily carried out with CONSTRUCTION CHEMICALS PATCH REPAIR MORTAR.*

*Simply clean the area to be repaired, shutter if required. Patch repair mortar will not slump therefore making repairs easy.*

*Ideal where heavy traffic such as forklifts are operating.*

### ADVANTAGES

1. Good abrasion resistance
2. Good chemical resistance (specific chemical resistances should be checked with our Technical Department)
3. Pre-weighed packs
4. Can be used in food preparation areas
5. Ideal for industrial units where a hard wearing surface is required.

### TECHNICAL DATA FAST CURE

Compressive strength	-	46N/mm <sup>2</sup> (48 hours)
Compressive strength	-	75N/mm <sup>2</sup> (72 hours)
Tensile strength	-	13N/mm <sup>2</sup>
Flexural	-	32N/mm <sup>2</sup>
Shelf life in sealed containers	-	12 months
Usable life (5.0kg) @ 20°C	-	20 minutes
S.G.	-	1.78
Walk on time @ 20°C	-	3 – 4 hours
Walk on time @ 10°C	-	6 – 8 hours
Full cure	-	7 days

### TECHNICAL DATA STANDARD CURE

Compressive strength (full cure) -	61N/mm <sup>2</sup>
Tensile strength	- 13N/mm <sup>2</sup>
Flexural	- 32N/mm <sup>2</sup>
Shelf life in sealed containers	- 12 months
Usable life (5.0kg) @ 20°C	- 30 minutes
S.G.	- 1.78
Walk on time @ 20°C	- 10 – 12 hours
Full cure	- 7 days

### SURFACE PREPARATION

Concrete should be at least 3 – 4 weeks old. The substrate should be clean, free from laitance, grease oil, moisture and any other agents that may impair adhesion.

### MIXING & PACKAGING

**CONSTRUCTION CHEMICALS** Epoxy Patch Repair System is supplied in 5.50kg units (also available in 11.0kg units) consisting of: -

1. Resin component A
2. Curing Agent component B
3. Filler component.

Add the full contents of curing agent component B to the epoxy resin component A and mix thoroughly for two minutes (some of this material may then be brush applied as a primer). Add the mixed material to the filler in the 10.0ltr bucket supplied and mix thoroughly until the aggregate is wetted.

### APPLICATION

Apply the mixed material to the primed substrate and screed to the required level. Finish to a resin rich surface using a steel trowel.

### CLEANING

Clean tools with Tool Cleaning Solvent such as turps or white spirit.

### HEALTH & SAFETY

It is recommended that barrier creams, gloves and protective clothing be worn when using CONSTRUCTION CHEMICALS Epoxy Patch Repair System.

If eyes are affected wash with copious amounts of cold water and seek medical advice. For hands, wash with soap and water.

For full details see separate Health & Safety Data Sheet.

